

# User Manual

Getting started with UP02 program upgrade tool

---

# 1. Contents

1. Contents.....	2
2. Introduction .....	3
3. System requirements .....	4
4. Package contents .....	5
5 The installation of UP02 program upgrade tool.....	6
5.1 Software installation.....	6
5.2 UP02 driver installation .....	6
5.3 Hardware installation .....	6
6. User interface description .....	7
6.1 Firmware Upgrade Interface .....	7
6.2 Configuration Upgrade Interface.....	8
7. Step-by-step procedures.....	10
7.1 Device how to enter program update interface .....	10
7.2 How to upgrade firmware.....	13
7.3 How to upload configuration .....	13
7.4 How to download configuration.....	13
8. Revision history.....	14

## 2. Introduction

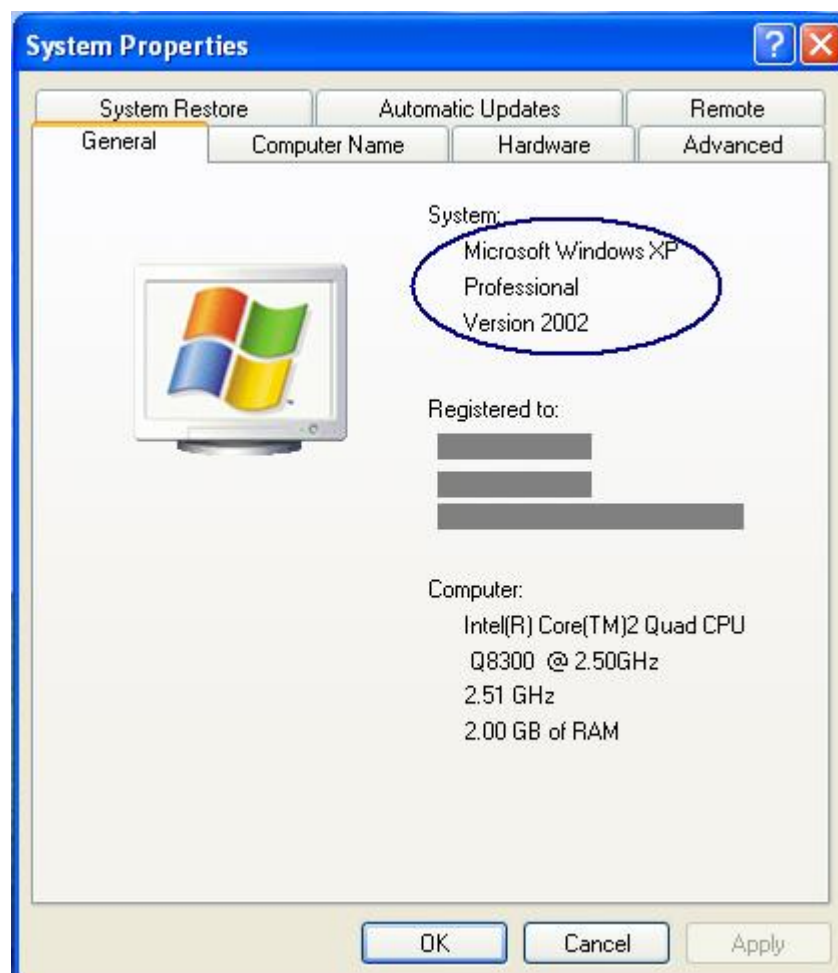
The UP02 program upgrade package includes two parts: Firmware and Configuration. The Firmware is MCU series program. The Configuration is parameters for each description of the device. The tool is used to upgrade the devention 2.4G transmitter's firmware such as DEVO-7 and some new receiver's firmware, and to upload or to download the configuration of them. This document describes how to install the UP02 program upgrade tool software, and how to install the driver of UP02, and how to use UP02 program upgrade tool. The UP02 program upgrade package can be downloaded at the official website <http://www.walkera.com>.

### 3. System requirements

In order to use the UP02 program upgrade tool with the Windows operating system, a recent version of Windows, such as Windows 98SE, Millennium, 2000, XP, or VISTA, must be installed on the PC.

The version of the Windows OS installed on your PC may be determined by right-clicking on the “**My Computer**” icon in the desktop, then clicking on the “**Properties**” item in the displayed PopUpMenu. The OS type is displayed in the “**System properties**” dialog box under the “**System**” label in the “**General**” tabsheet (see **Figure 1**).

**Figure 1. System properties dialog box**



## 4. Package contents

The following items are supplied in this package:

### **Software contents**

**SerialAngel\_V1.x\_Setup.exe:** Installation file which installs the UP02 program upgrade tool applications and the driver package of UP02 on your computer.

### **Hardware contents**

This tool is designed to work with the transmitter and receiver product which supports the device upgrade firmware via UP02. For more details, please visit the official web site at [http:// www.walkera.com](http://www.walkera.com) .

## 5 The installation of UP02 program upgrade tool

### 5.1 Software installation

Run **SerialAngel\_V1.x\_Setup.exe** file: the Installation Shield Wizard will guide you to install UP02 program upgrade tool applications on your computer. When the software is successfully installed, click the “**Finish**” button.

### 5.2 UP02 driver installation

- I You can explore the driver package. The driver package files are located in your installed path (**C:\Program files\UP02 Program Upgrade Tool**).
- I According to your Windows platform, run the “**Setup Driver**” or the “**Setup Driver x64**”.  
Start -> All Programs -> UP02 Program Upgrade Tool -> **Setup Driver**.  
Or Start -> All Programs -> UP02 Program Upgrade Tool -> **Setup Driver x64**.  
The Installation Shield Wizard will guide you to install UP02 driver on your computer.

### 5.3 Hardware installation

- I Let the UP02 connect to a spare USB port on your PC.
- I The System will auto complete the installation.

**Figure 2. System Found New Hardware**



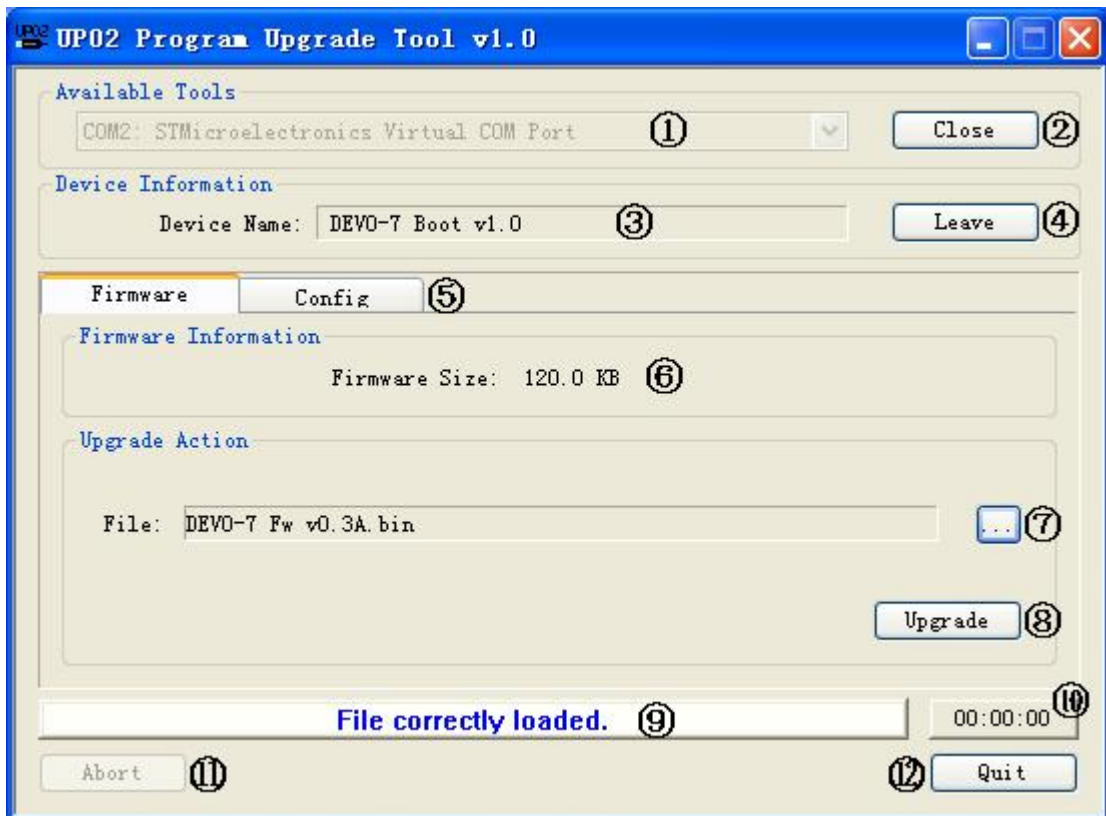
## 6. User interface description

This section describes the different user interfaces available in the UP02 program upgrade tool package, and explains how to use them to perform operations such as Upgrade, Upload and Download.

UP02 program upgrade tool need to be able to be performed without any special training, even by novice users. Hence, the user interface was designed to be as robust and simple to use as possible.

### 6.1 Firmware Upgrade Interface

**Figure 3: Firmware upgrade interface**



I The numbers in **Figure 3** refer to the description in **Table 1**.

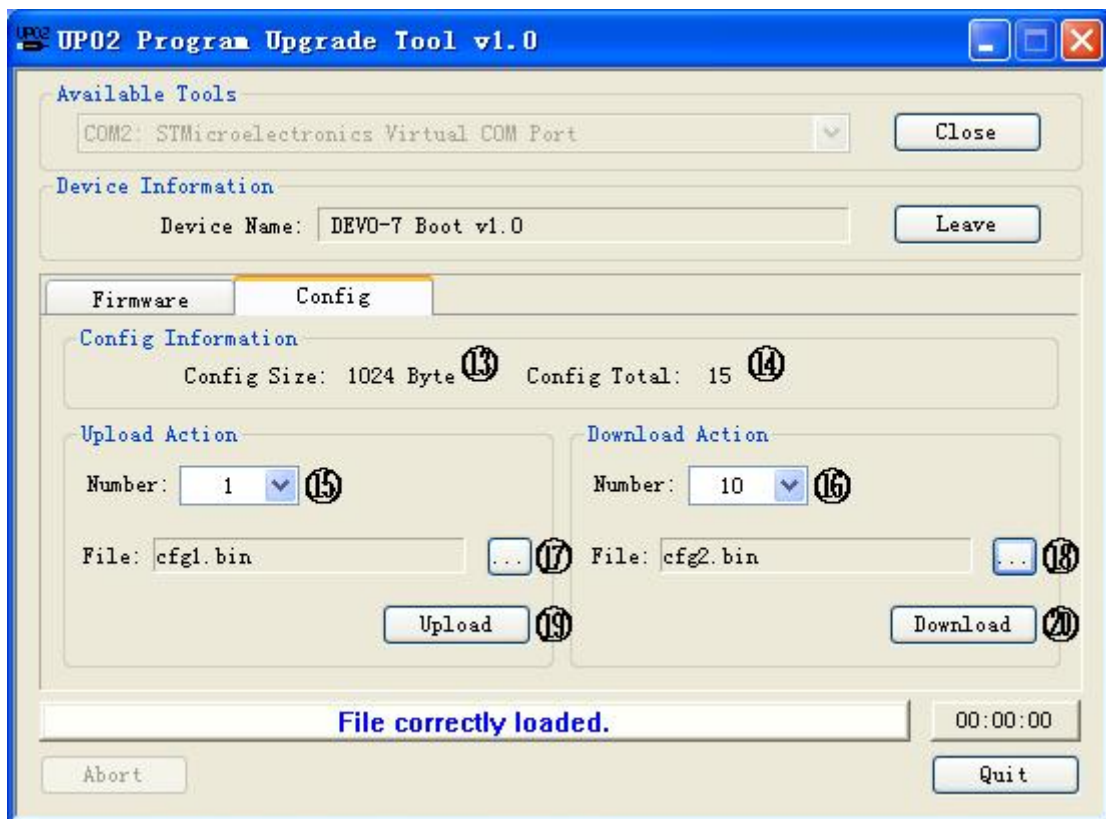
**I Table 1. UP02 Program Upgrade Tool - Firmware upgrade interface description**

Control	Description
1	Lists the available UP02 tools, the selected one is the one currently used.
2	Connect UP02 to device, or close it.
3	Device information, identifiers for the device name.
4	Send Leave command. The device will exit current mode to normal working.

5	The target control of firmware and configuration.
6	The device available maximum firmware size.
7	Choose source firmware file, the upgrade data will be loaded from this file.
8	Start Upgrade firmware operation.
9	Show the progress of the current operation.
10	Duration time of the current operation.
11	Abort current operation.
12	Exit application.

## 6.2 Configuration Upgrade Interface

Figure 4: Configuration upgrade interface



I The numbers in **Figure 4** refer to the description in **Table 2**. Other contents refer to **Figure 3** and **Table 1**.

I **Table 2. UP02 Program Upgrade Tool – Configuration upgrade interface description**

Control	Description
13	The device configuration size.
14	The device configuration total number.



---

15	The number of device configuration for upload from device to PC.
16	The number of device configuration for download from PC to device.
17	Choose destination configuration file, the uploaded data will be copied into this file.
18	Choose source configuration file, the download data will be loaded from this file.
19	Start Upload configuration operation.
20	Start Download configuration operation.

## 7. Step-by-step procedures

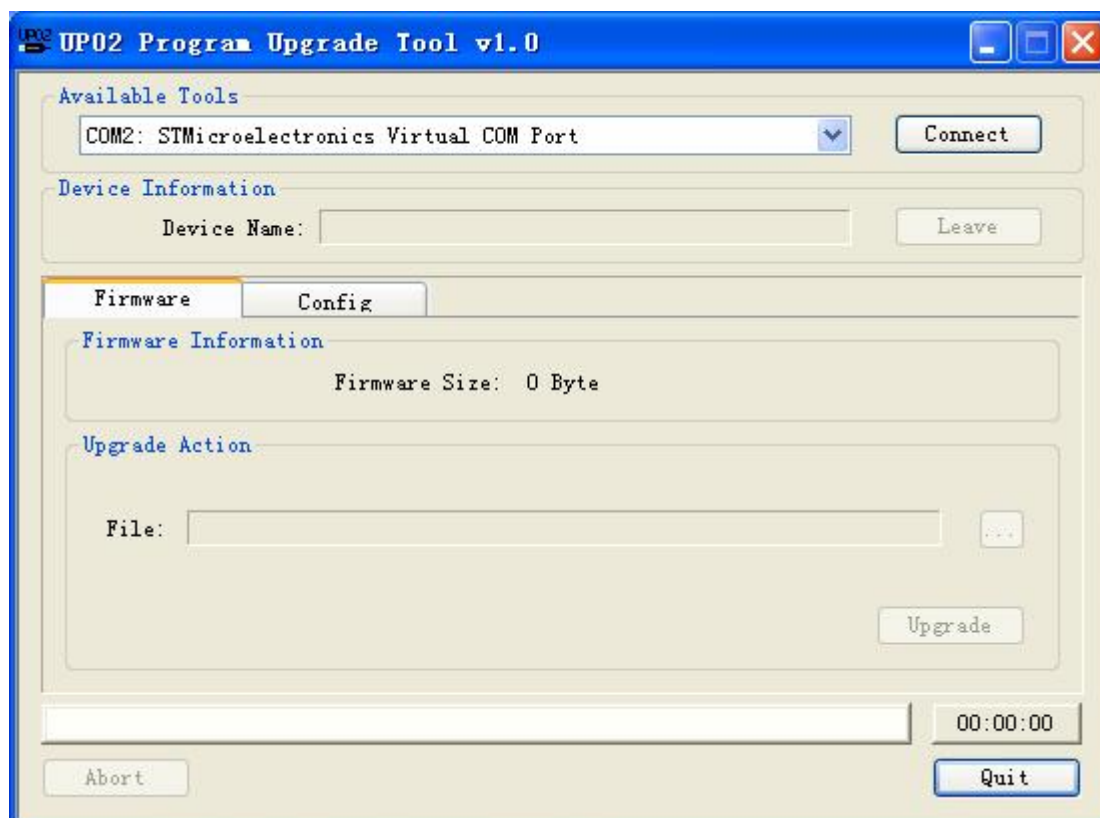
### 7.1 Device how to enter program update interface

- I Connect UP02 to a spare USB port on your PC.
- I Connect the  $\phi 3.5$  plug to your device. To see device user manual.
- I Run the “**UP02 Program Upgrade**”. Start -> All Programs -> UP02 Program Upgrade Tool -> UP02 Program Upgrade.

**Figure 5: The interface of welcome to run UP02 Program Upgrade Tool**

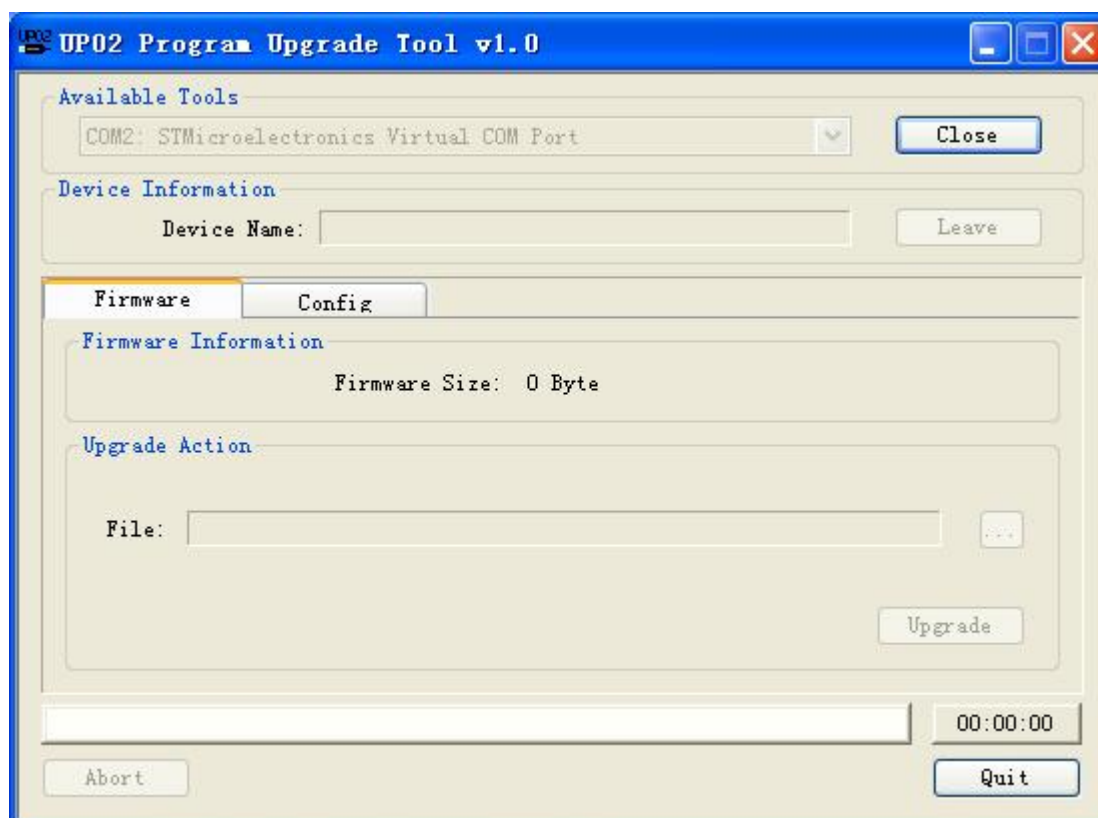


**Figure 6: The interface of UP02 Program Upgrade Tool**



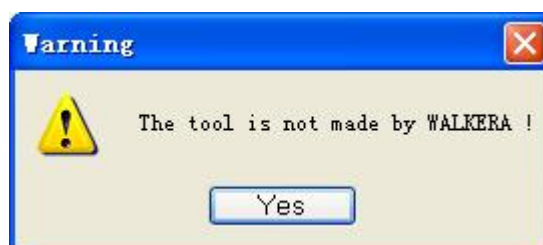
- I Click “**Connect**”.

**Figure 7: The interface of UP02 Program Upgrade Tool Waiting**



- I If pops up “**Warning**” as shown below, please check your UP02 whether made by walkera, or click “**Connect**” again.

**Figure 8: The interface of UP02 Program Upgrade Tool Warning**



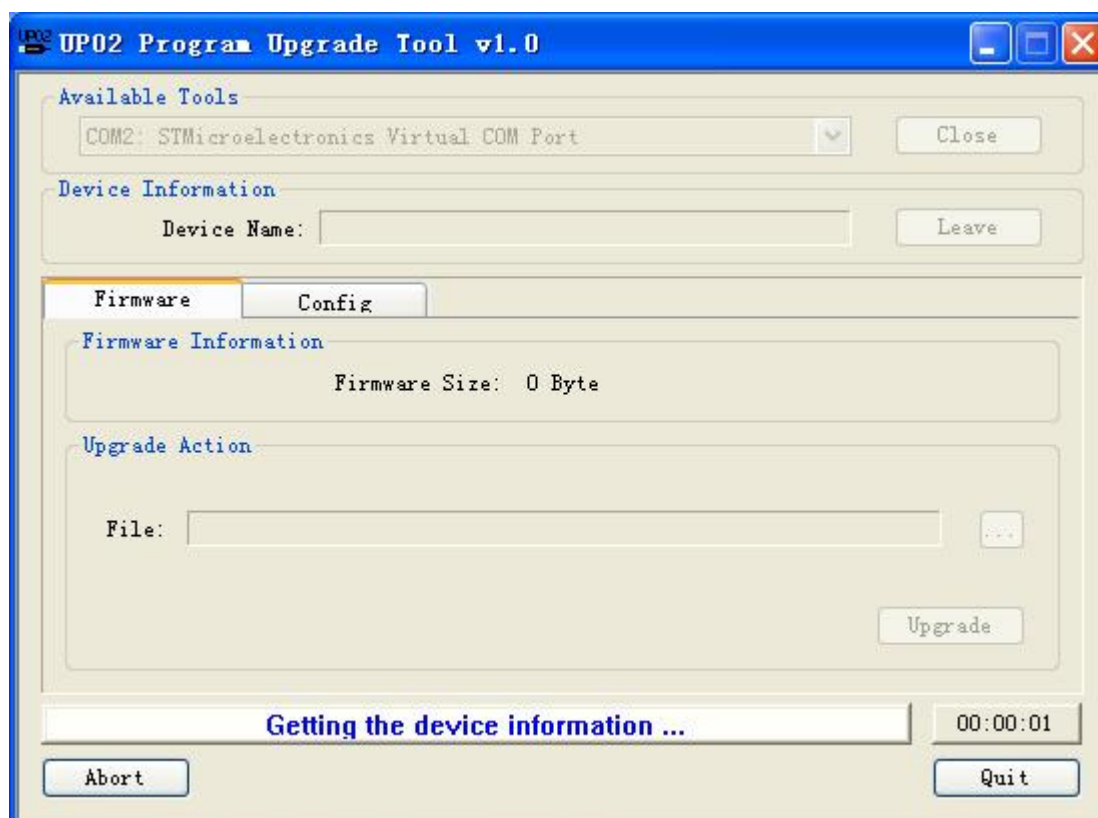
- I Power on the device, let it into program upgrade interface. Some device has the specific steps of itself. Such as DEVO-7.

Press the DEVO-7’s **EXT** key, when it is power off.

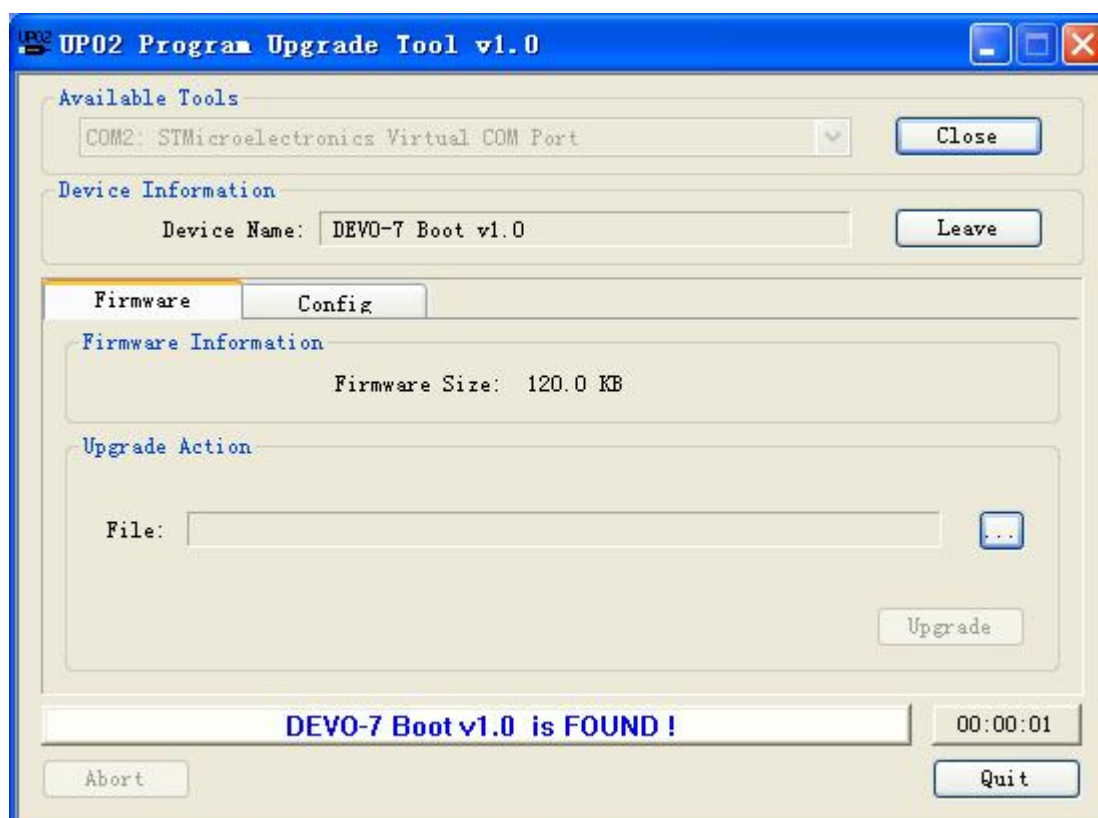
Move **POWER** switch to on. The “**—UPGRADE—**” will be shown on LCD.

- I UP02 program upgrade tool will detect device information.

**Figure 9: The interface of UP02 Program Upgrade Tool getting device information**



**Figure 10: The interface of UP02 Program Upgrade Tool Working**



- I If UP02 program upgrade tool found the device, user can upgrade firmware and upload or download the configuration.

## 7.2 How to upgrade firmware

- I Select firmware for operation. (**Item 5 in Table 1/Figure 3**)
- I Click **item 7 in Table 1/Figure 3** to select an available firmware file.
- I Click the “**Upgrade**” button (**Item 8 in Table 1/Figure 3**) to start upgrading the firmware file content to the device.

## 7.3 How to upload configuration

- I Select configuration for operation. (**Item 5 in Table 1/Figure 3**)
- I Click **item 15 in Table 2/Figure 4** to select the number for upload.
- I Click **item 17 in Table 2/Figure 4** to select the file for saved configuration.
- I Click “**Upload**” button (**Item 19 in Table 2/Figure 4**), to start uploading the content of appointed configuration to the selected file.

## 7.4 How to download configuration

- I Select configuration for operation. (**Item 5 in Table 1/Figure 3**)
- I Click **item 16 in Table 2/Figure 4** to select the number for download.
- I Click **item 18 in Table 2/Figure 4** to select a configuration file.
- I Click the “**Download**” button (**Item 20 in Table 2/Figure 4**) to start downloading the content of configuration file to the appointed configuration of the device.

## 8. Revision history

**Table 3: Document revision history**

Date	Revision	Changes
2011-12-23	1.0	Initial release.