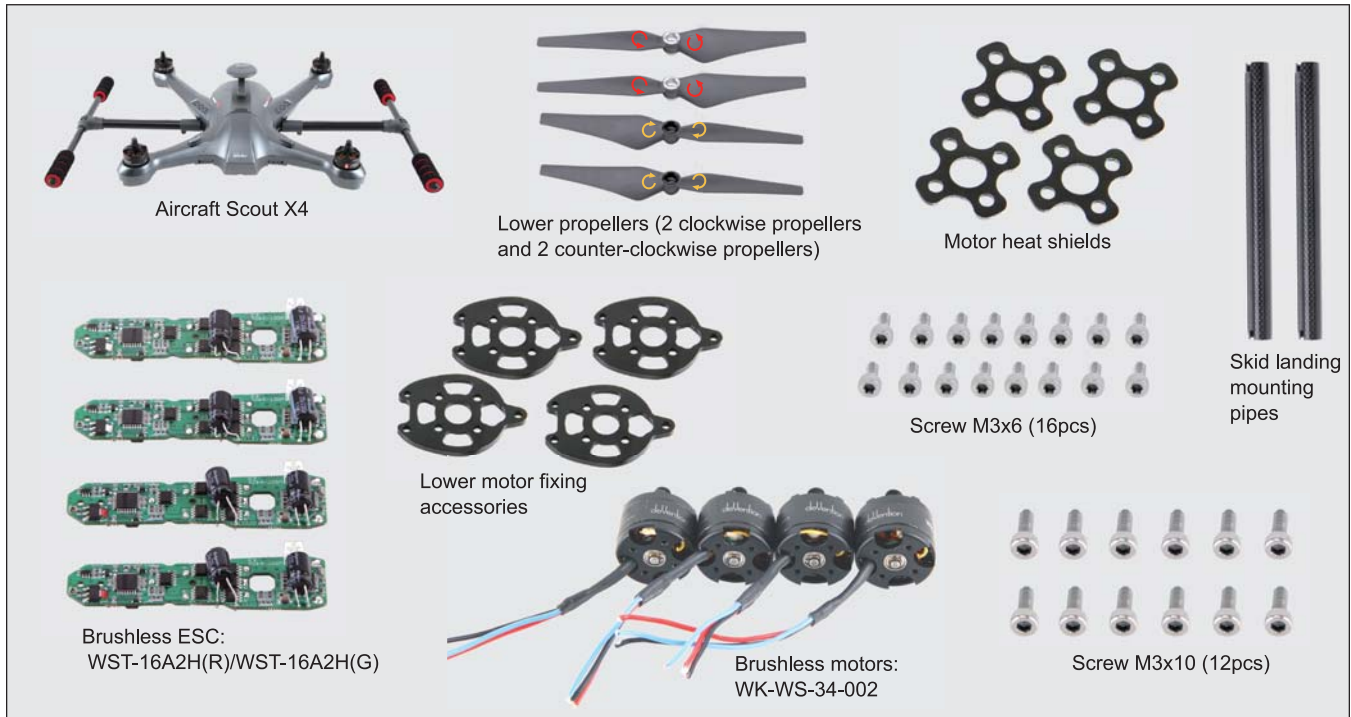
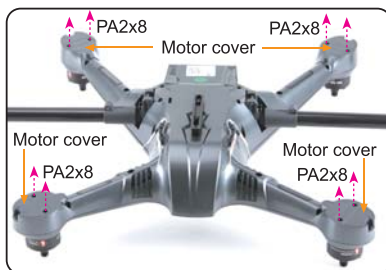


## 1.0 Upgrade preparation

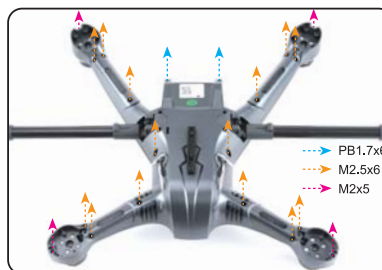
Prepare the aircraft Scout X4, lower propellers (2 clockwise propellers and 2 counter-clockwise propellers), skid landing mounting pipes (2 pcs), motor heat shields (4pcs), lower motor fixing accessories (4pcs), WK-WS-34-002 brushless motors (2 levogyrate thread motors and 2 dextrogyrate thread motors), brushless speed controllers (2 WST-16A2H(R) and 2 WST-16A2H(G)), screws (16pcs for M3x6, and 12pcs for M3x10).



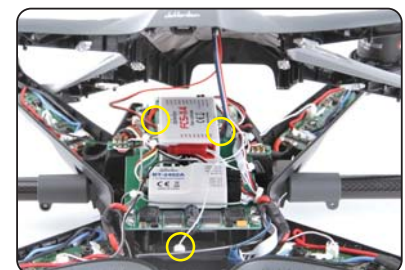
## 2.0 Upgrade Steps



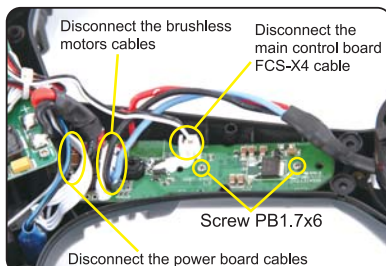
2.1 Unscrew at the bottom of aircraft the PA2x8 screws (8pcs) and remove the 4 motor covers.



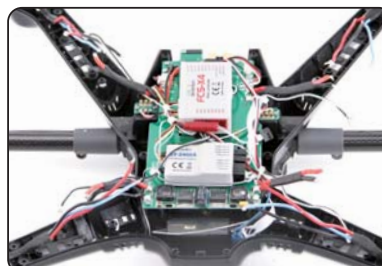
2.2 Unscrew at the bottom of aircraft the screws M2x5 (4pcs), M2.5x6 (14pcs), PB1.7x6 (2pcs) and set them aside.



2.3 Remove the upper body of the aircraft and disconnect the GPS cable.



2.4 Disconnect the four brushless ESC from the FCS-X4 main control board, from the power board and also from the brushless motors. Unscrew the PB1.7x6 screws (8pcs). Remove the brushless speed controllers and lampshades.



2.5 Disconnection picture.



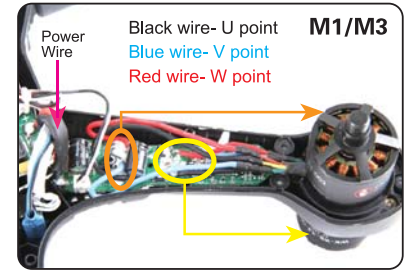
2.6 Put the WK-WS-34-002 brushless motor cables through the lower motor fixing accessory and put down the motor heat shield.



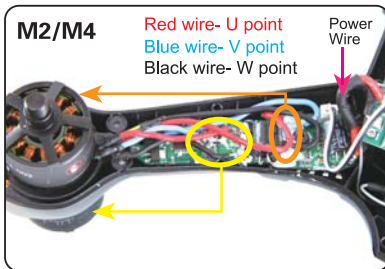
2.7 Fix the WK-WS-34-002 brushless motor with M3x6 screw.



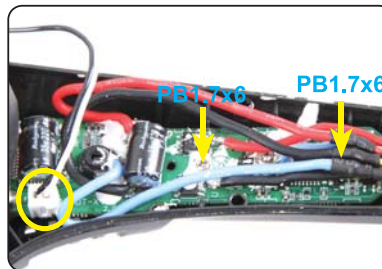
2.8 Assemble the WK-WS-34-002 brushless motor(**dextrorotate thread**) on **M1/M3 position**, assemble the WK-WS-34-002 brushless motor (**levogyrate thread**) on **M2/M4 position**, fix the lower motor fixing accessory with M3x10 screw.



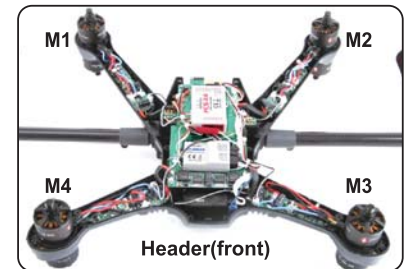
2.9 Assemble the WST-16A2H(R) brushless speed controller on the behind of the aircraft, Assemble the WST-16A2H(G) brushless speed controller on the front of the aircraft; Solder the M1/M3 motors' black, blue, red wire in corresponding with U, V, W point; Solder the power red, black wire in corresponding with +, -pole, and fix with appropriate sealant (Please cut the motor wire properly).



2.10 Solder the M2/M4 motors' red, blue, black wire in corresponding with U, V, W point; Solder the power red, black wire in corresponding with +, -pole, and fix with appropriate sealant (Please cut the motor wire properly).



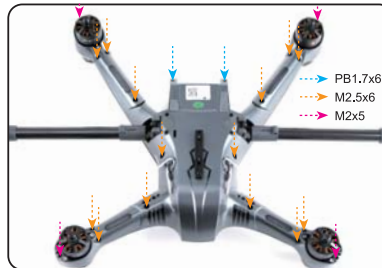
2.11 Connect the 4 brushless ESC and FCS-X4 main control board, put on lampshade, screw up 8pcs PB1.7x6 screws to fix the brushless ESC.



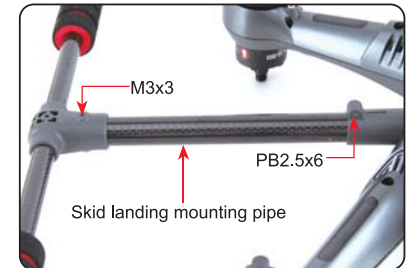
2.12 Effect drawing.



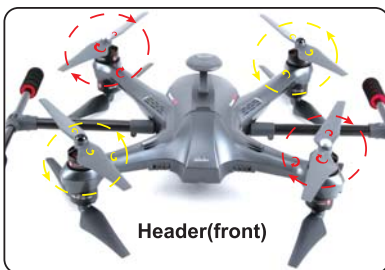
2.13 Connect GPS red, white, blue, black four color wire to Main control board's GPS port, Red, black two color wire connect to Main control board's Compass port, White signal wire connect to Receiver's TELEMETRY CON port, install the top cover.



2.14 Screw to bottom 4 pcs M2x5, 14 pcs M2.5x6, 2 pcs PB1.7x6 screws.



2.15 Screw off M3x3, PB2.5x6 screws, take out left/right skid landing mounting pipe, install lengthened skid landing mounting pipe, screw up the screws.



2.16 Match the arrows on the upper / lower propellers to the arrows on the arrow next to each motor. Screw each propeller onto the motor, secure by hand, no need for tools (During installing propeller, the direction of rotation and the arrow label are in the opposite direction).



2.17 Effect drawing for 4 motors upgraded to 8 motors.