



Item number: QR X350PRO

Newest version: V1.1

Date	Upgrade history	Software download
2014-4-21	QR X350 program file V1.1 release	X350_Pro1.1

Instruction for latest upgrade

Note:

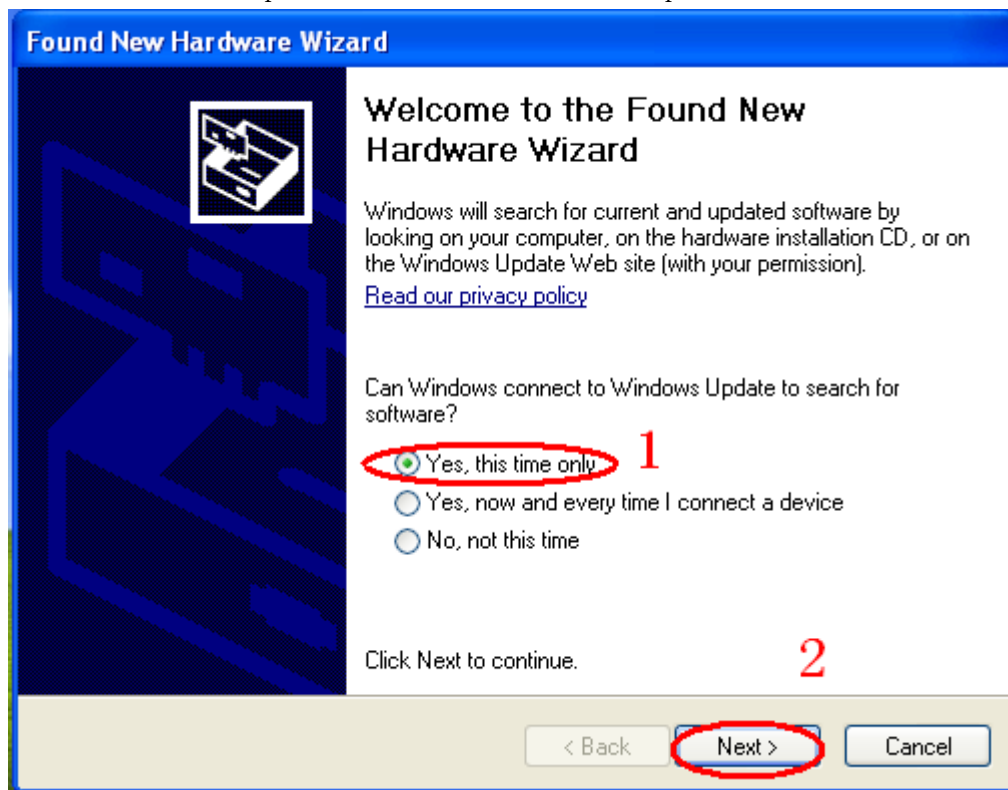
- 1, USB cable is required for program upgrade.
2. This upgrade optimizes control handle and stability under GPS mode

Upgrade steps:

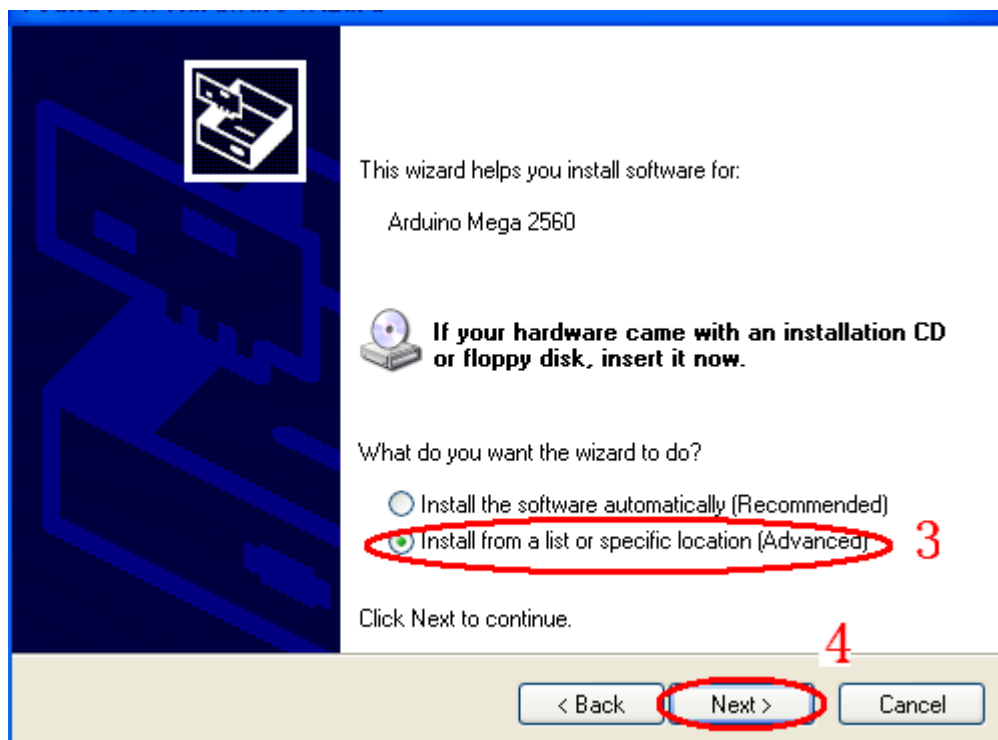
- 1, Download upgrade file and drive software from Walkera official website.
2. Insert Mini USB to QR X350PRO upgrade port, chart as below:



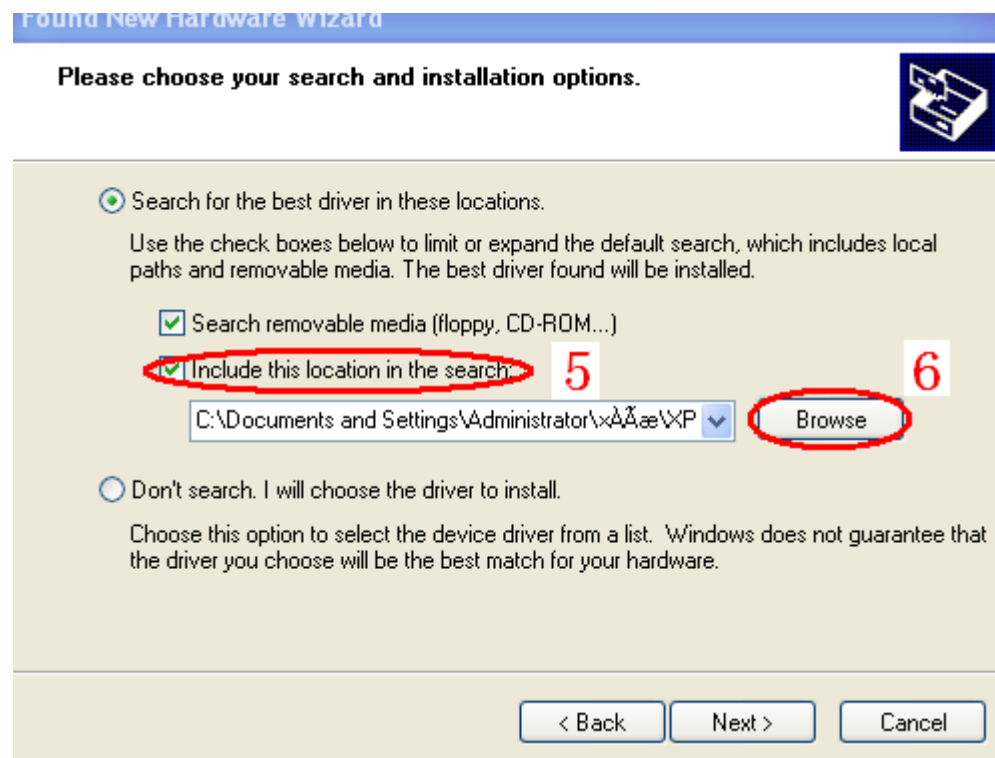
3, “ Found NEW Hardware Wizard” will be showed on your computer desk, please choose Step 1 and then Next for step 2.



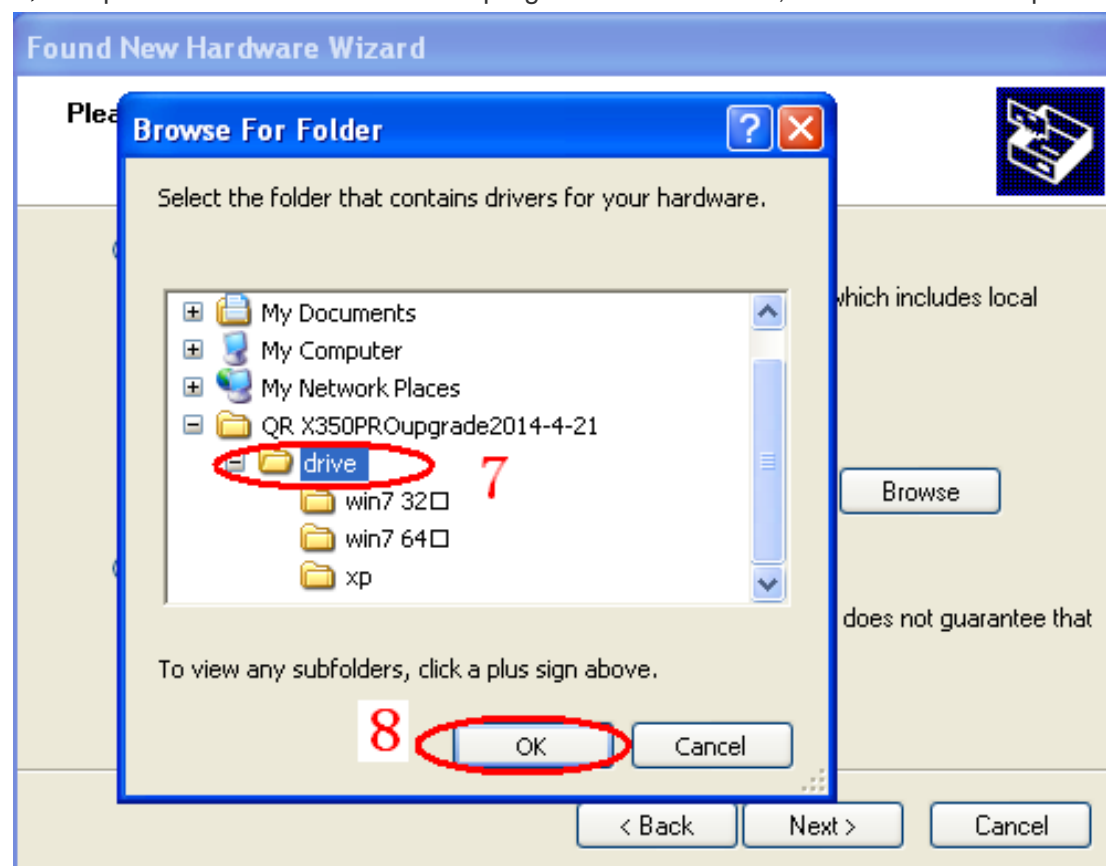
4, Step 3 : choose “Install from a list or specific location(Advanced)” and then Next for Step 4.



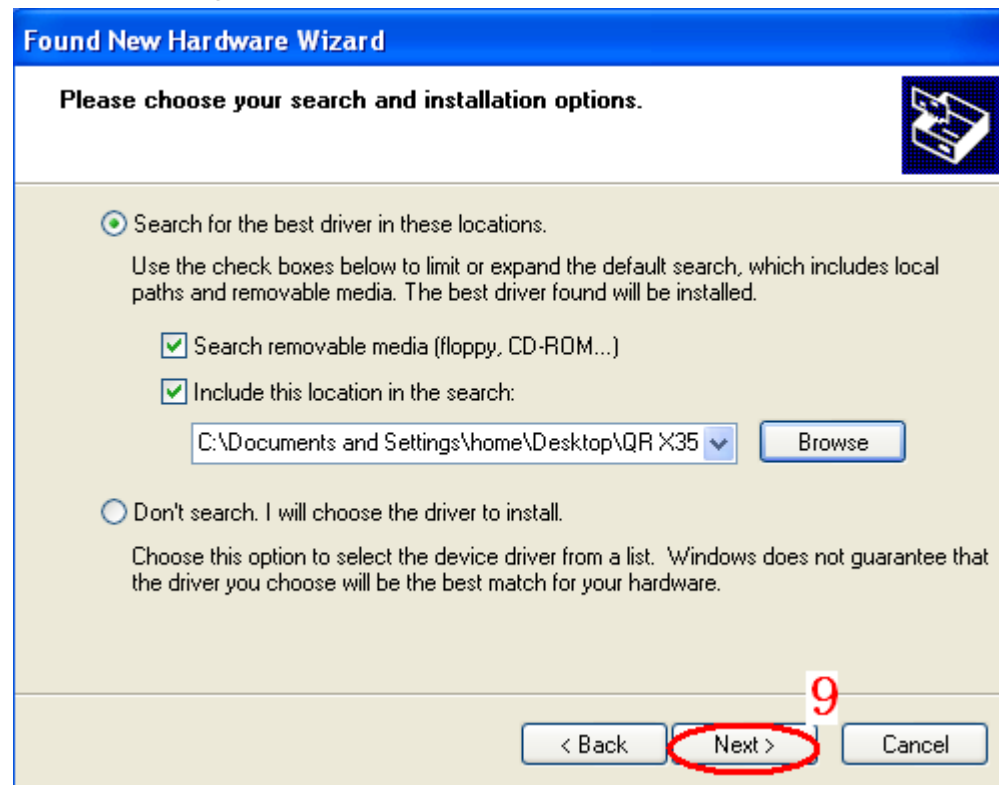
5, Step 5: mark ✓ “Include this location in the search” and then Browse for step 6.



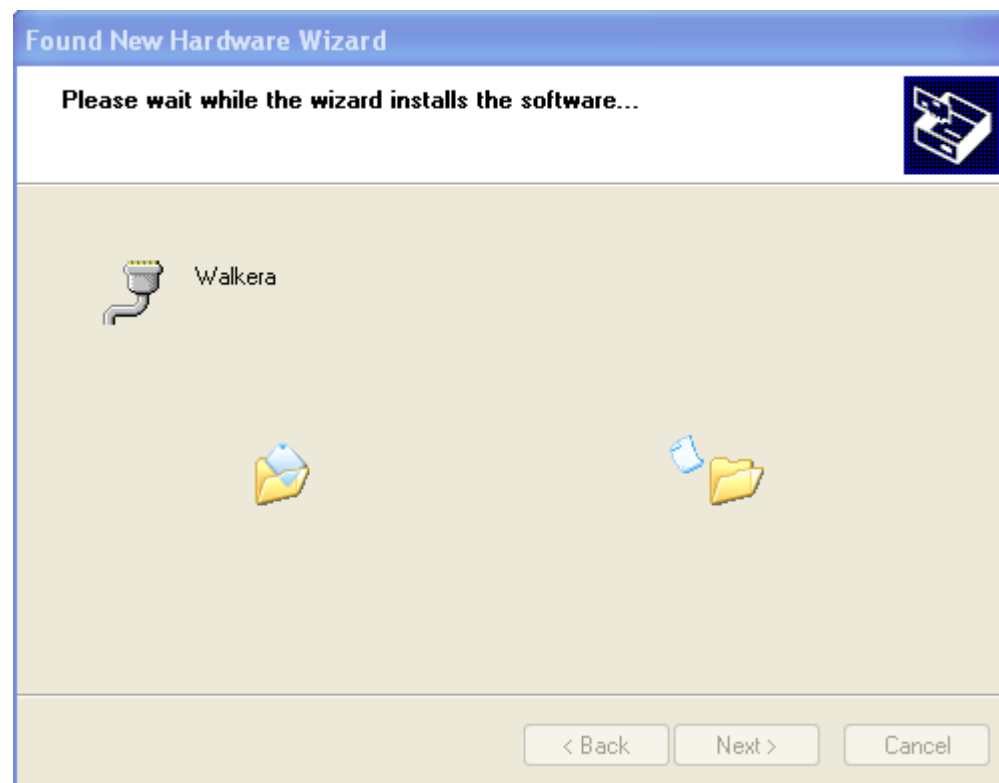
4, Step 7: choose downloaded drive program route as below, and then Ok for step 8



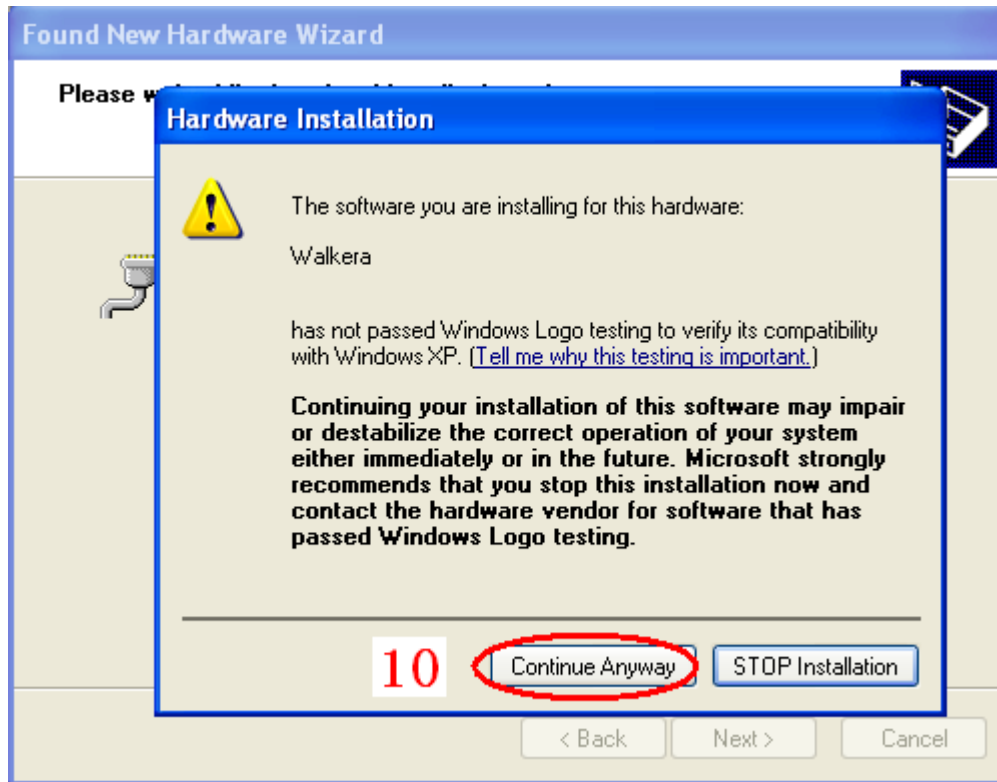
5, The following interface appears, please click next for step 9



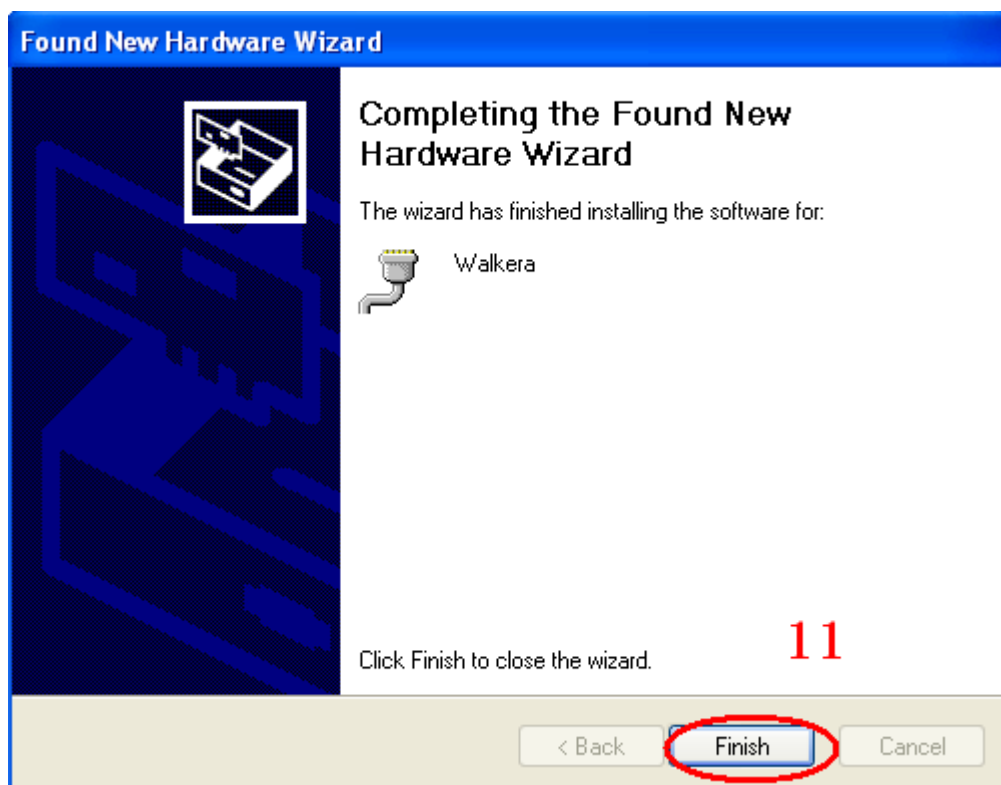
Installation drive program interface will be showed.



6. Step 10: choose “Continue Anyway” in following interface.




7. Step 11: “Completing the Found New Hardware Wizard” appears and then click “Finish”

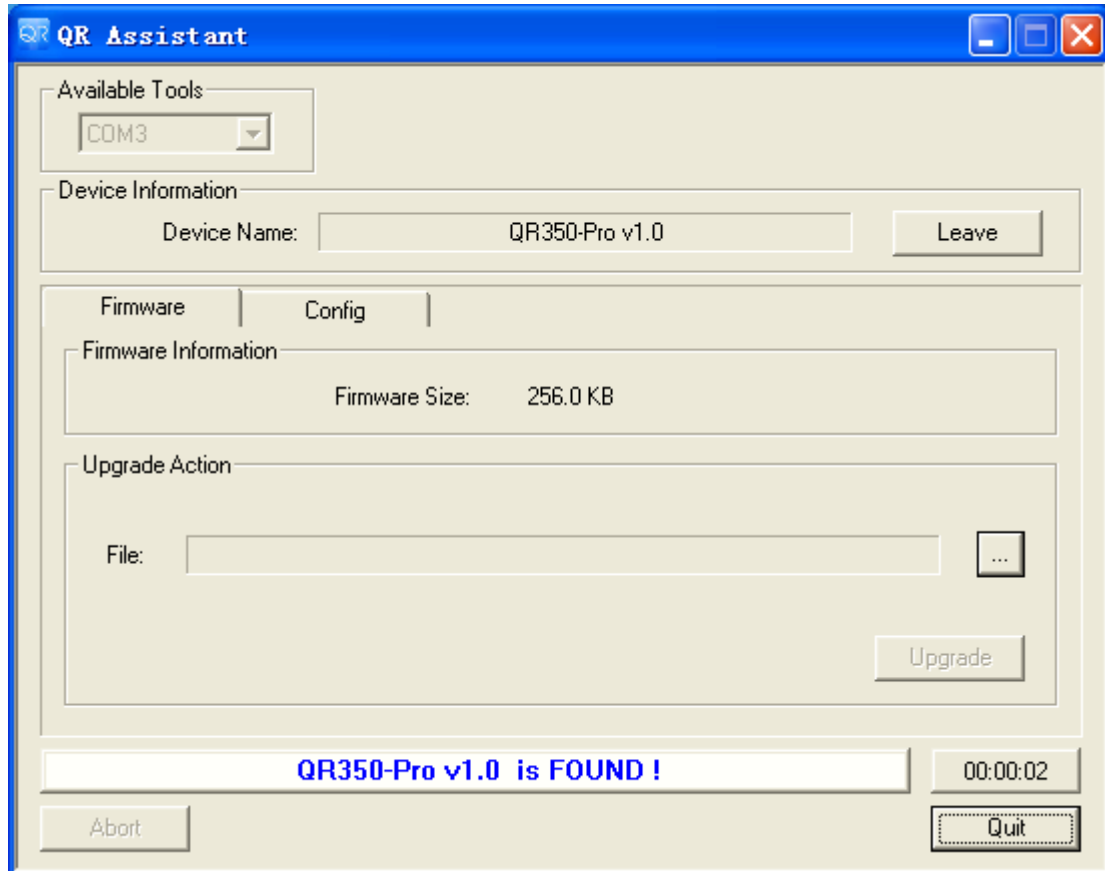


After PC drive program installation finished, Program upgrade can be started.

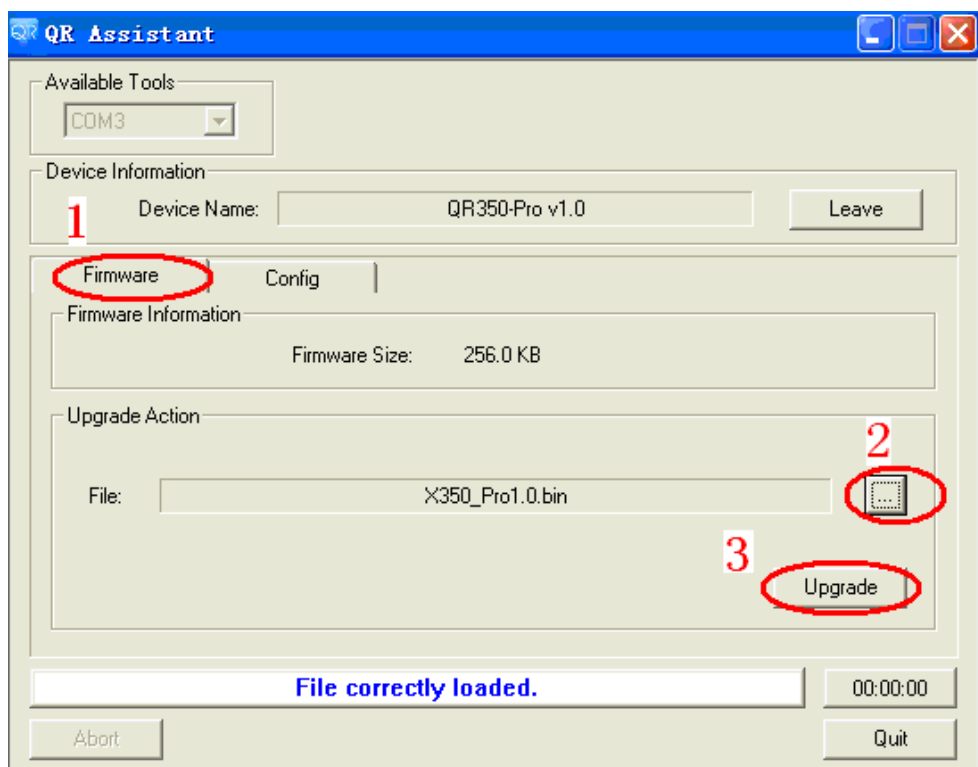
二. Program upgrade steps

1, Click downloaded upgrade software() icon, open the upgrade program,

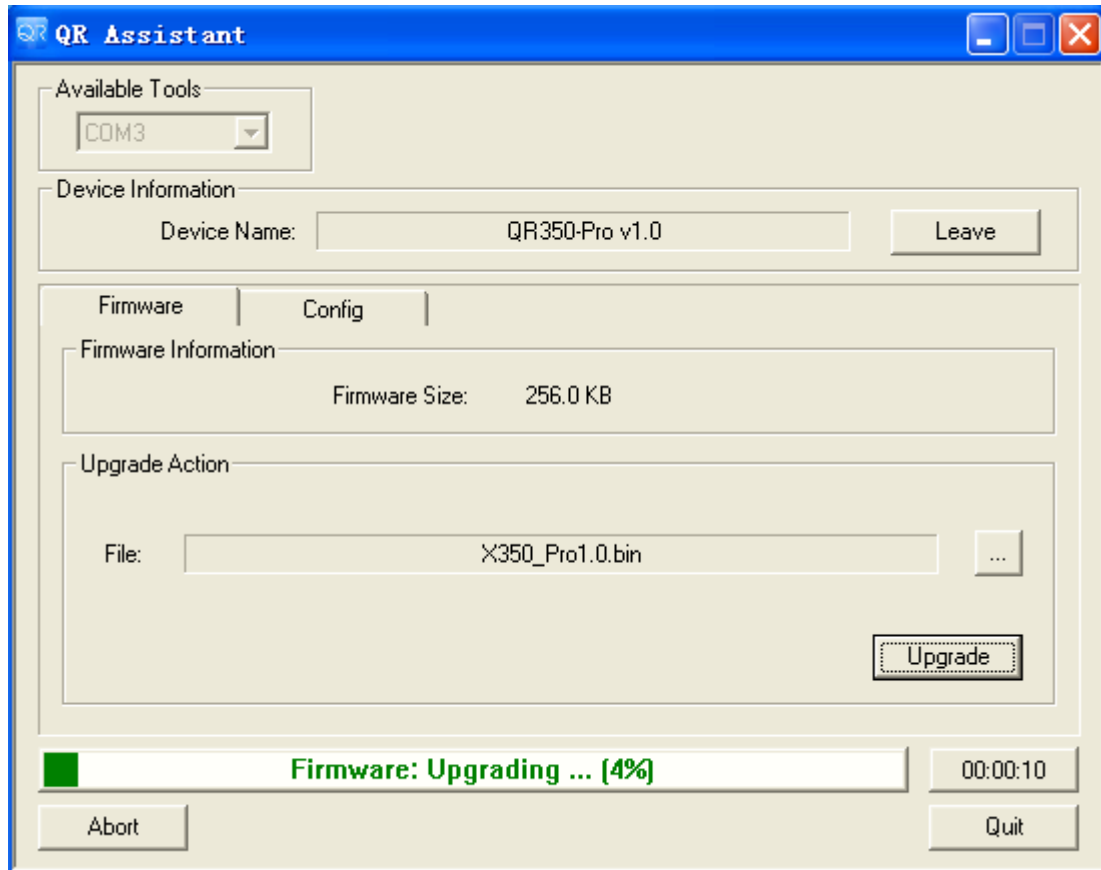
It will automatic identify Model NO. as following chart:



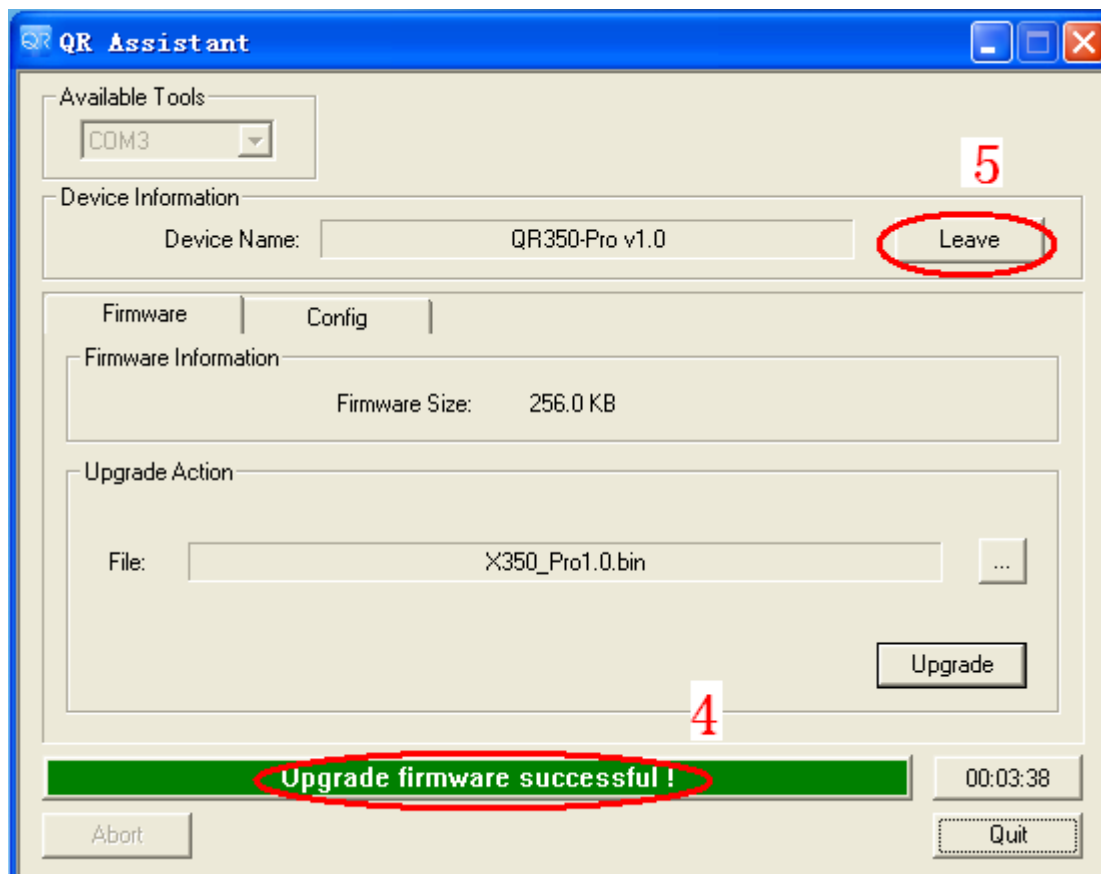
2, Step 1, click “Firmware” and then open file option to select “X350_Pro1.1” for Step 2. Click “Upgrade” for start upgrade



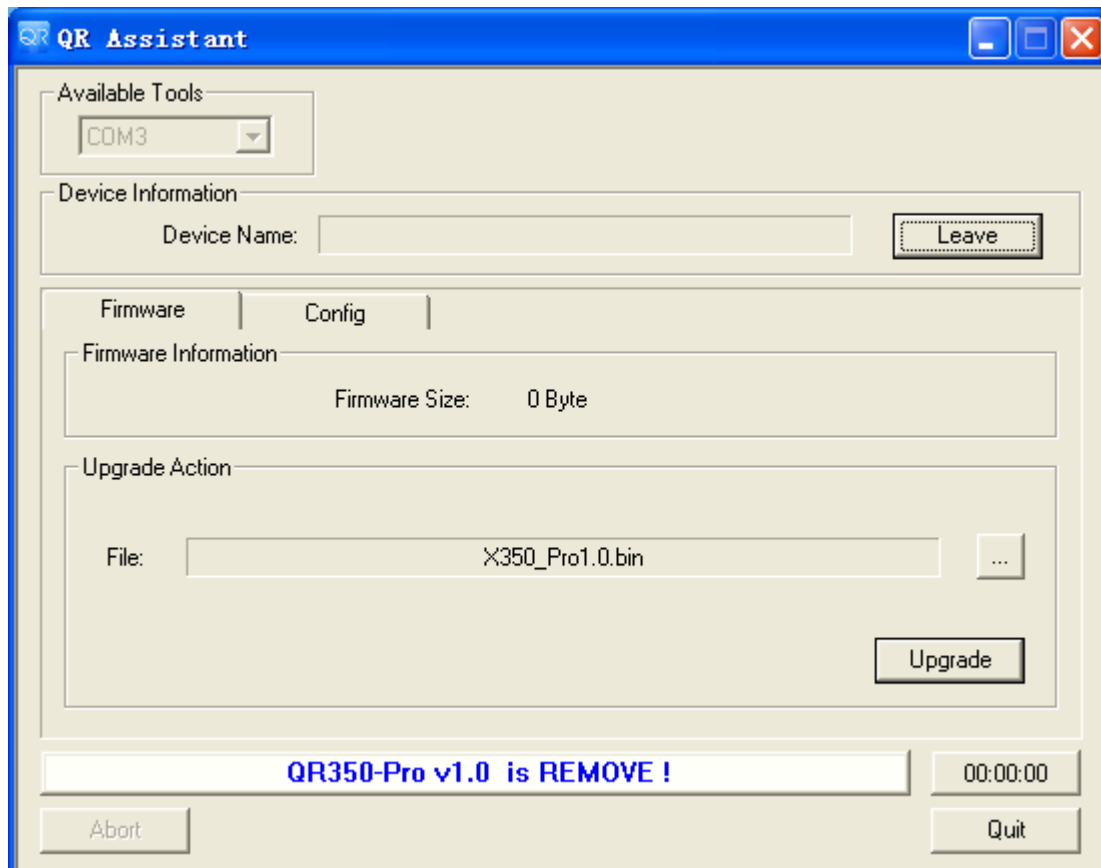
Program is upgrading as below chart.



3, Step 4: Upgrade interface appears “upgrade firmware successful ! ” and then click “Leave” for Step 5, as following Chart.



4, You can remove USB upgrade cable when the following chart occurs and the upgrade complete.



5, After upgrade complete, please check every setting parameters and actions before flight. Normal condition can be ready for flight.