



Item NO. : QRX350PRO

latest version: V1.2

Date	Upgrade history	Software download
2014-6-25	QRX350 PRO V1.2 released	QRX350-ProV1.2

Instruction for upgrading

Notes:

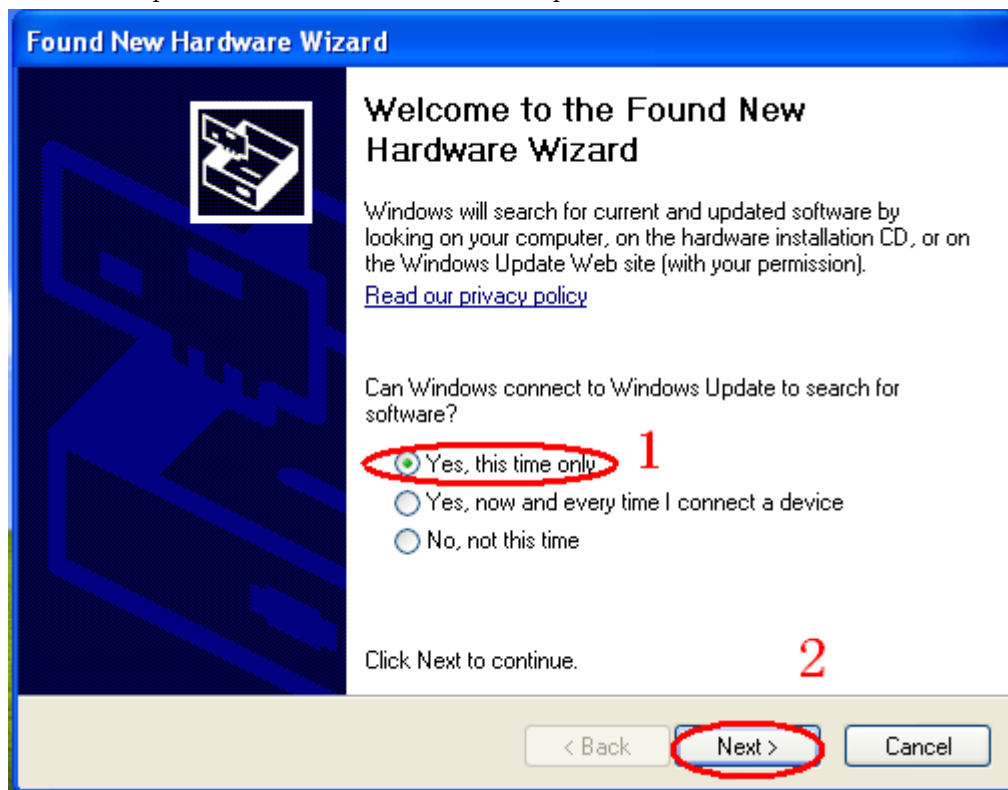
- 1, Mini USB cable is required for program upgrade.
2. **This upgrade is for the sake of stability and optimization.**

Upgrade steps:

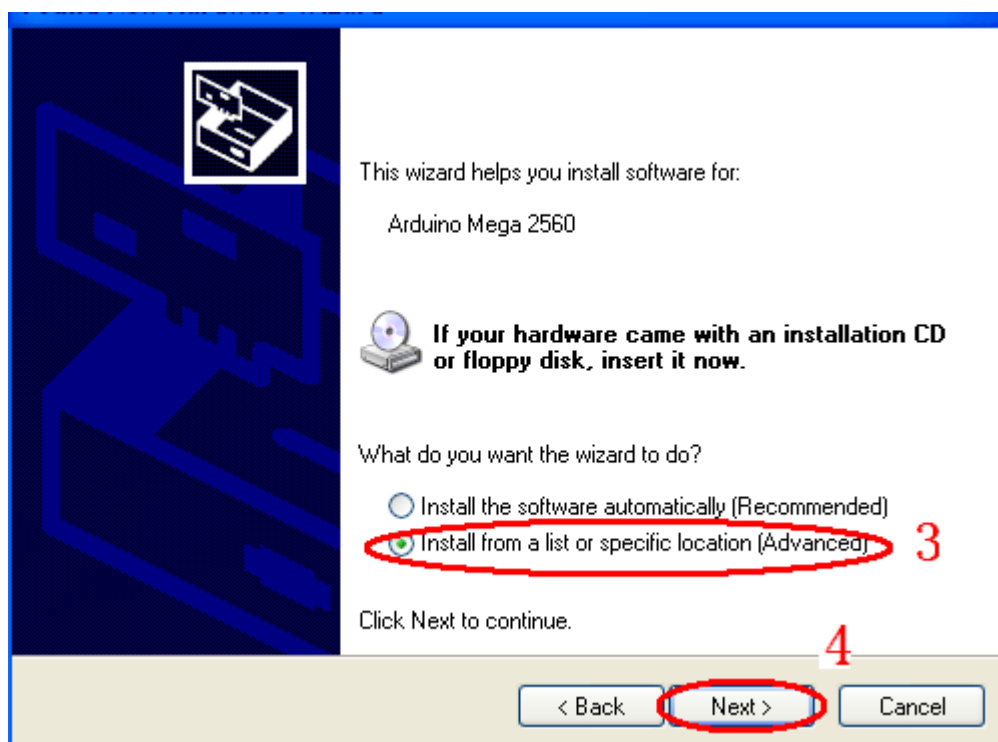
- 1, Download upgrade file and drive software from Walkera official website.
2. Insert Mini USB to QRX350PRO upgrade port, chart as below:



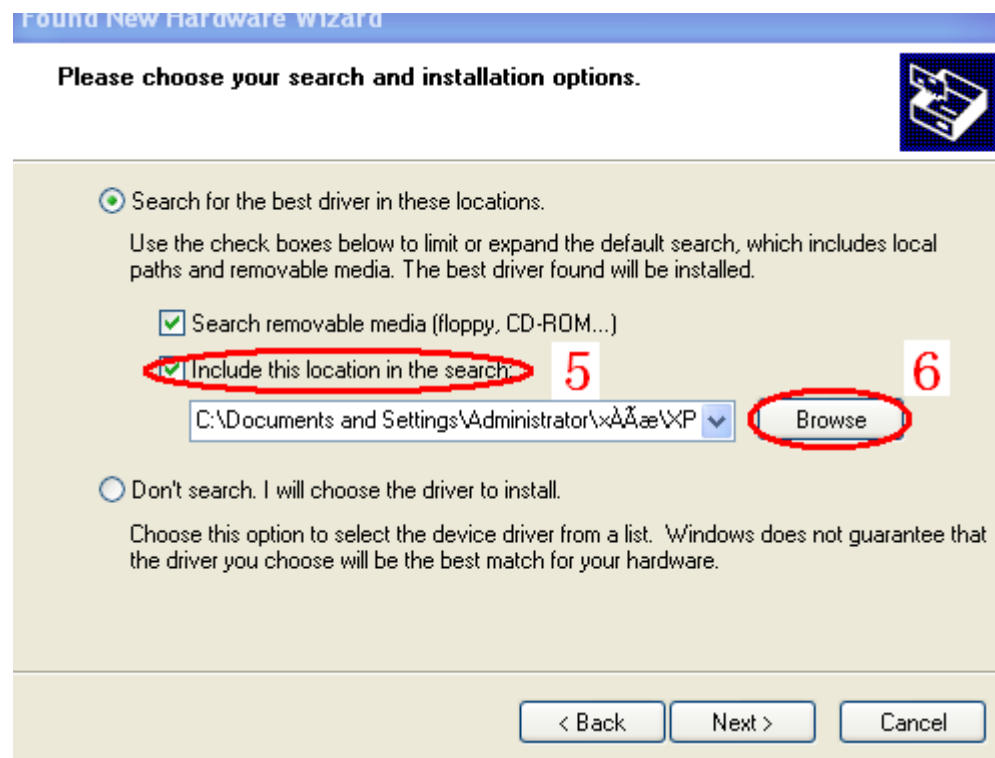
3, “ Found NEW Hardware Wizard” will be showed on your desktop,please choose Step 1 and then Next for step 2.



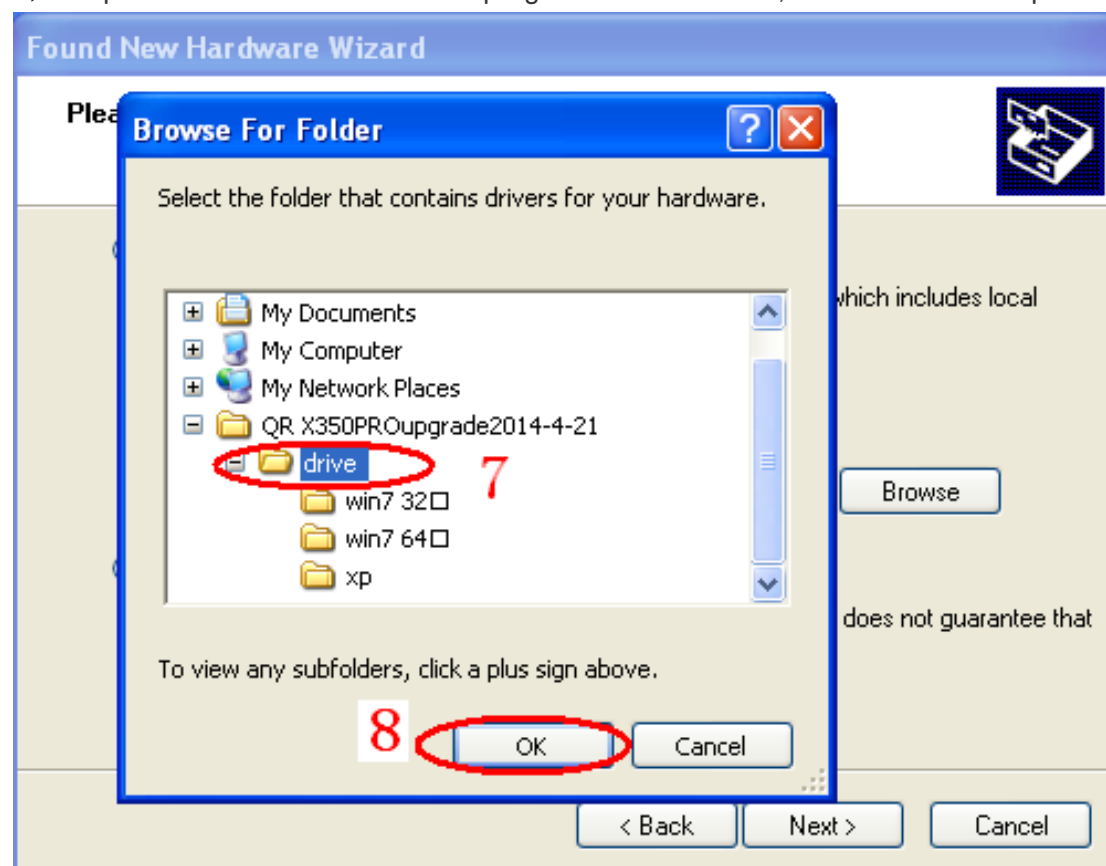
4, Step 3 : choose “Install from a list or specific location(Advanced)” and then Next for Step 4.



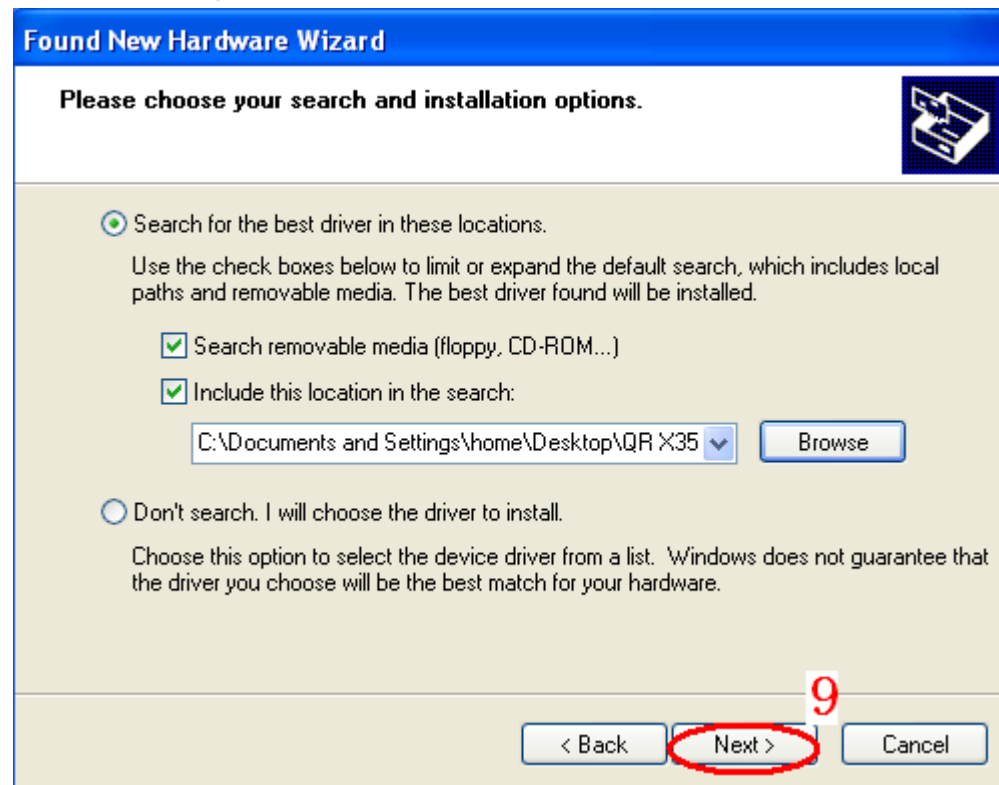
5, Step 5: mark ✓ “Include this location in the search” and then Browse for step 6.



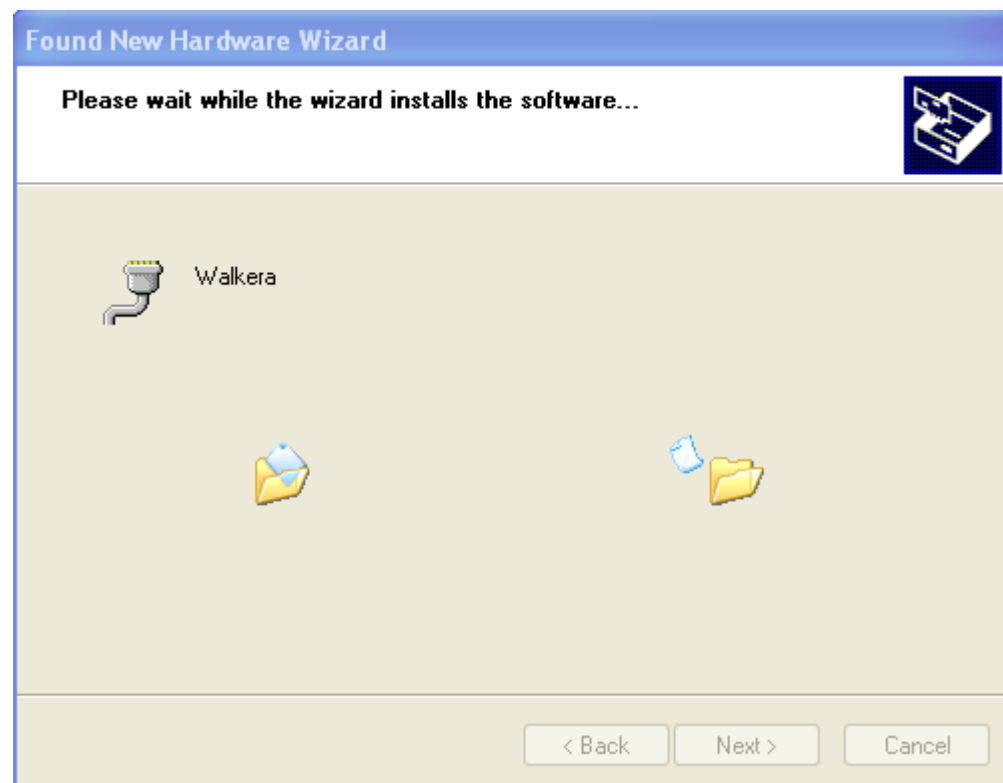
4, Step 7: choose downloaded drive program route as below, and then Ok for step 8



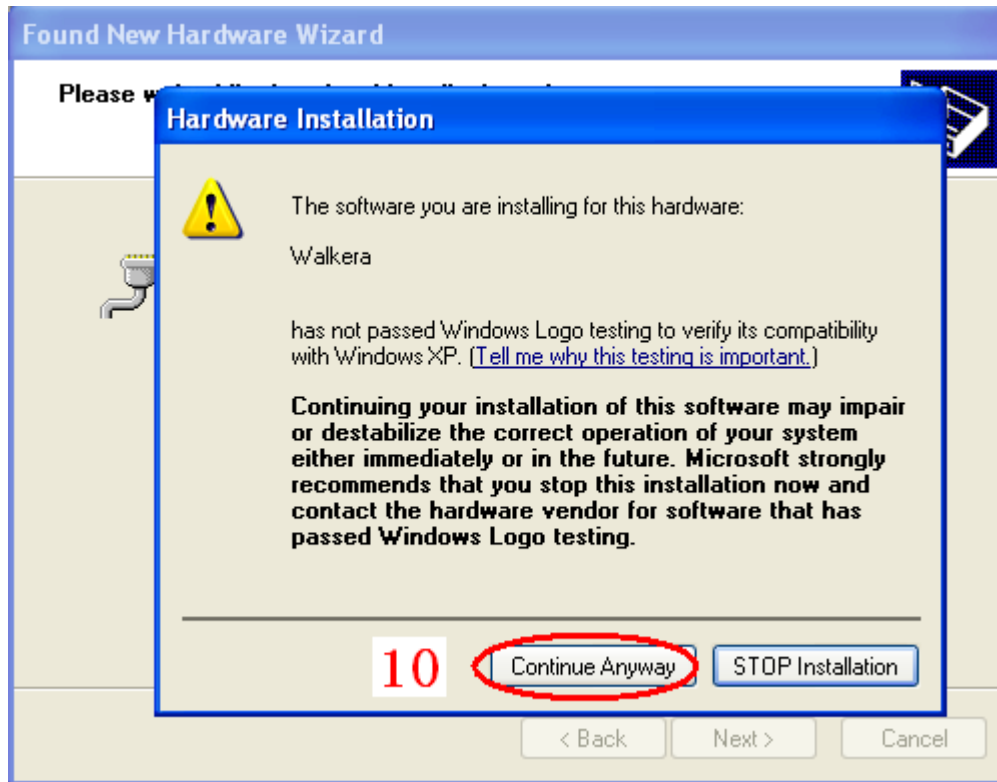
5, The following interface appears. Next for step 9



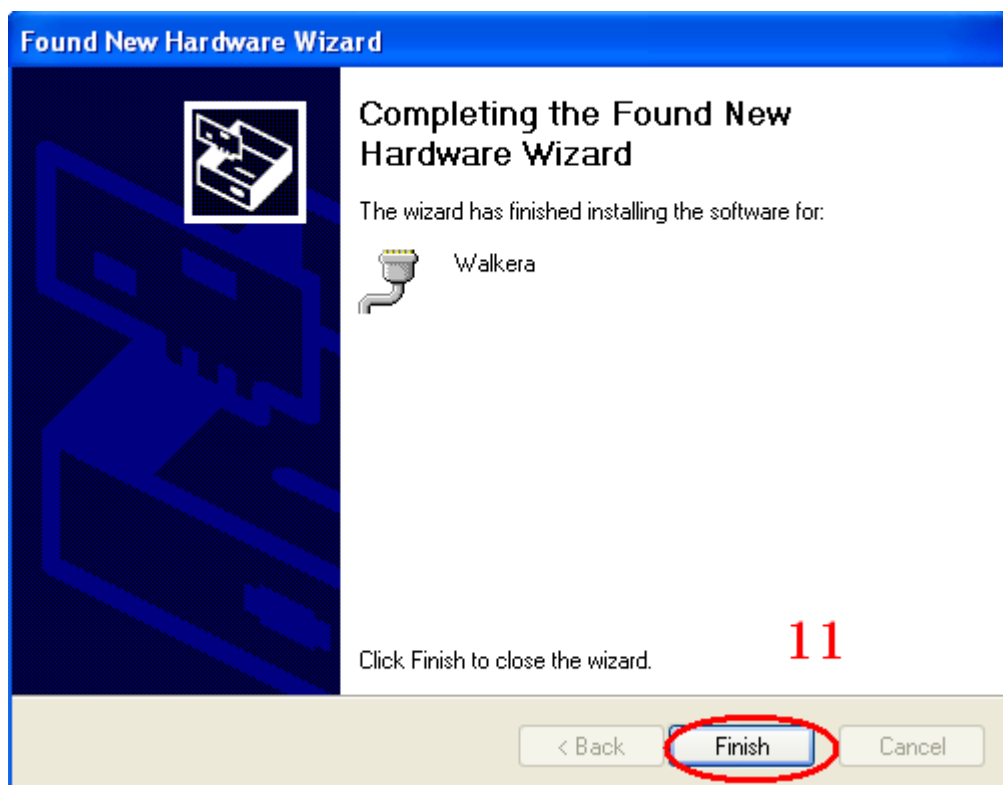
Installation drive program interface is showed.



6. Step 10: choose “Continue Anyway” in following interface.



7. Step 11: “Completing the Found New Hardware Wizard” appears and then click “Finish”

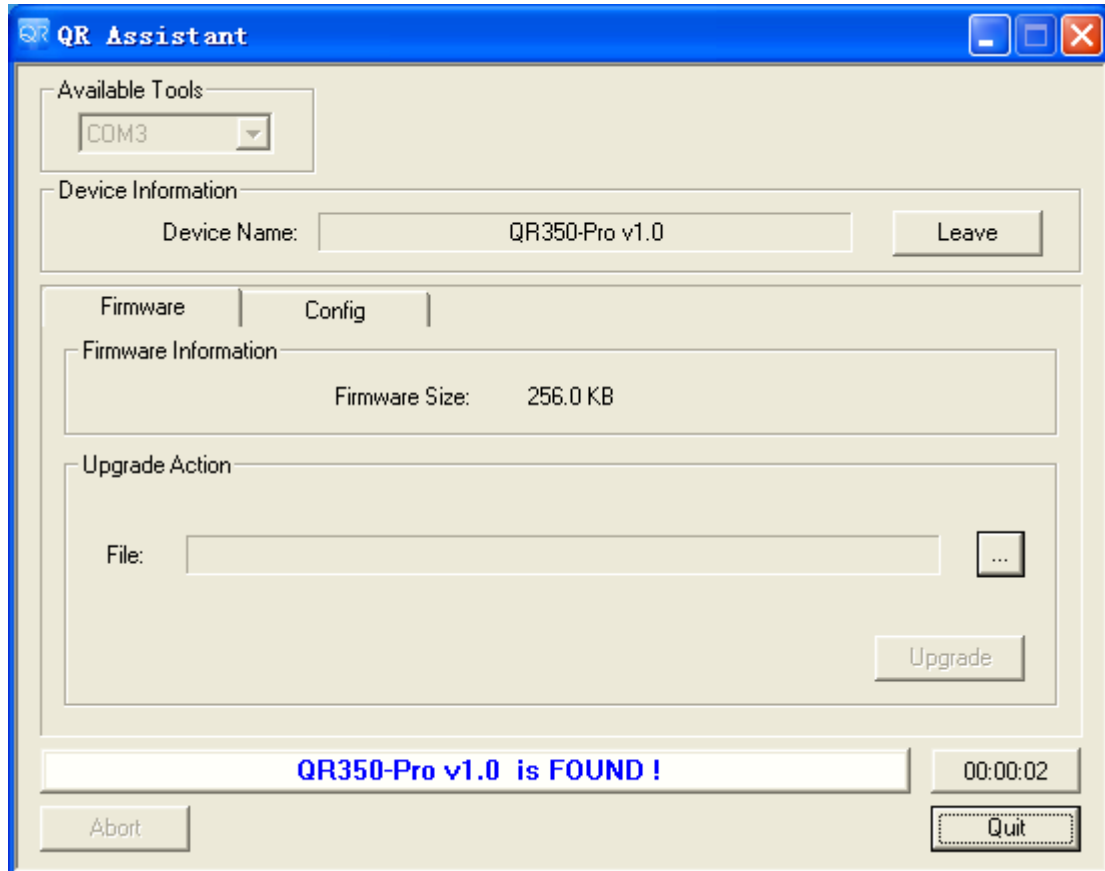


After PC drive program installation finished, Program upgrade can be started.

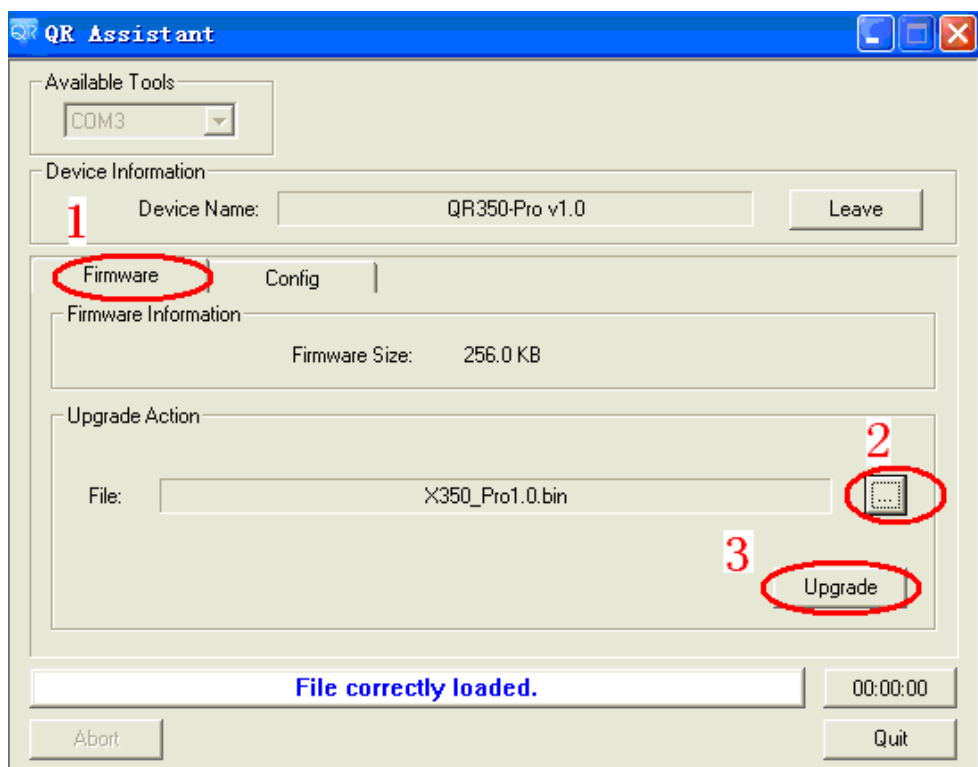
二. Program upgrade steps

1, Click downloaded upgrade software() icon, open the upgrade program,

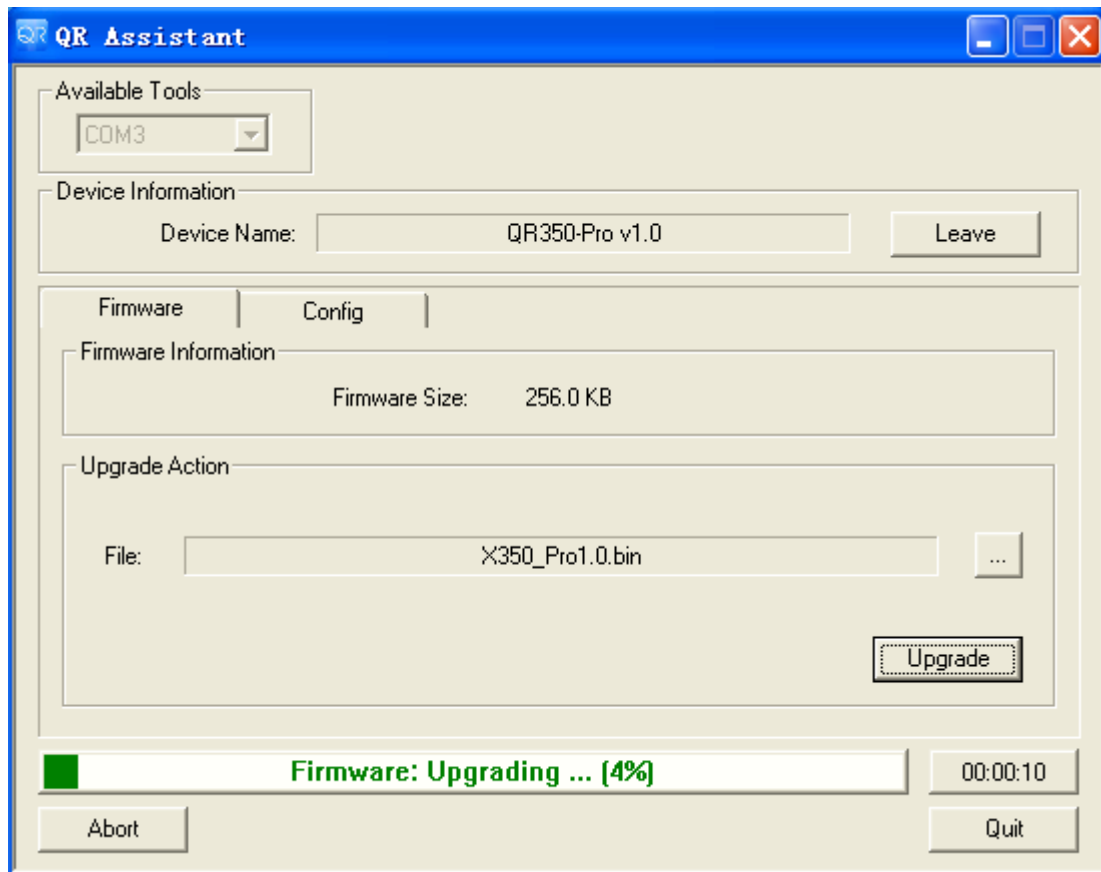
It will automatically identify Model NO. as following chart:



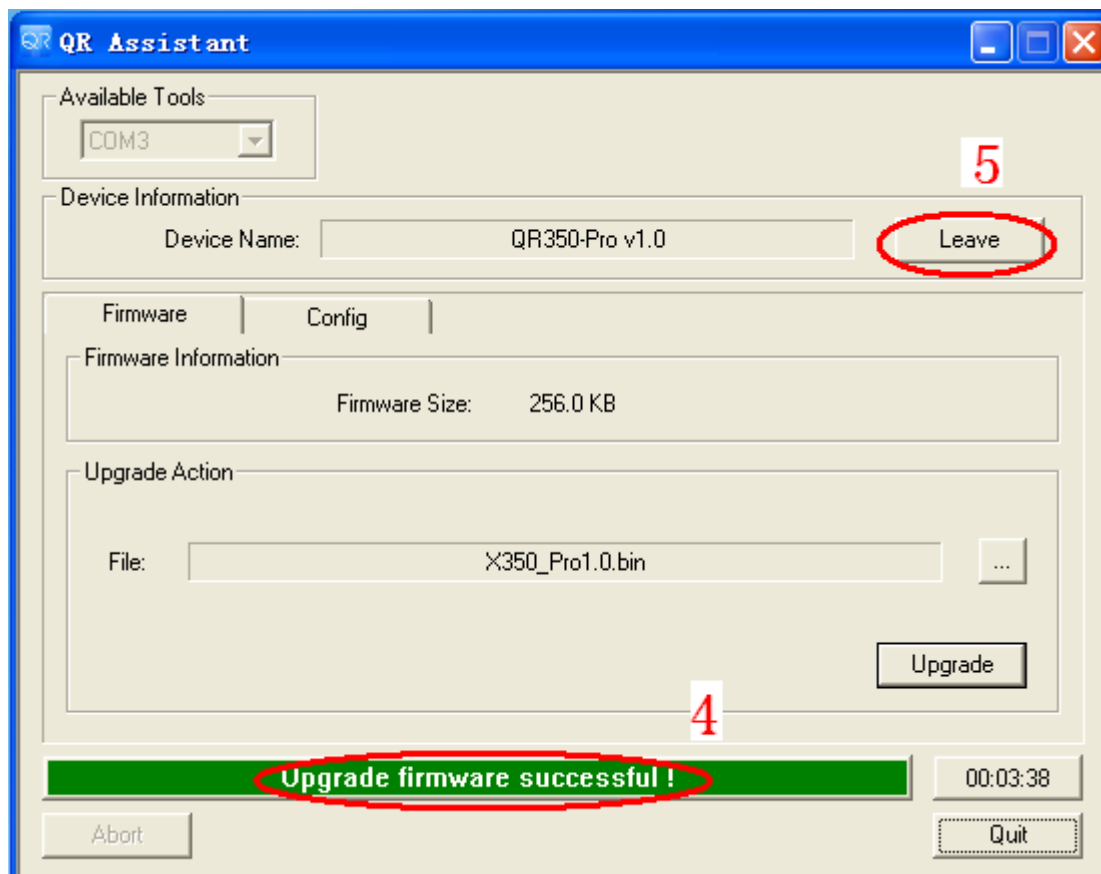
2, Step 1, click “Firmware” and then open file option to select “X350_Pro1.1” for Step 2. Click “Upgrade” for acting upgrade



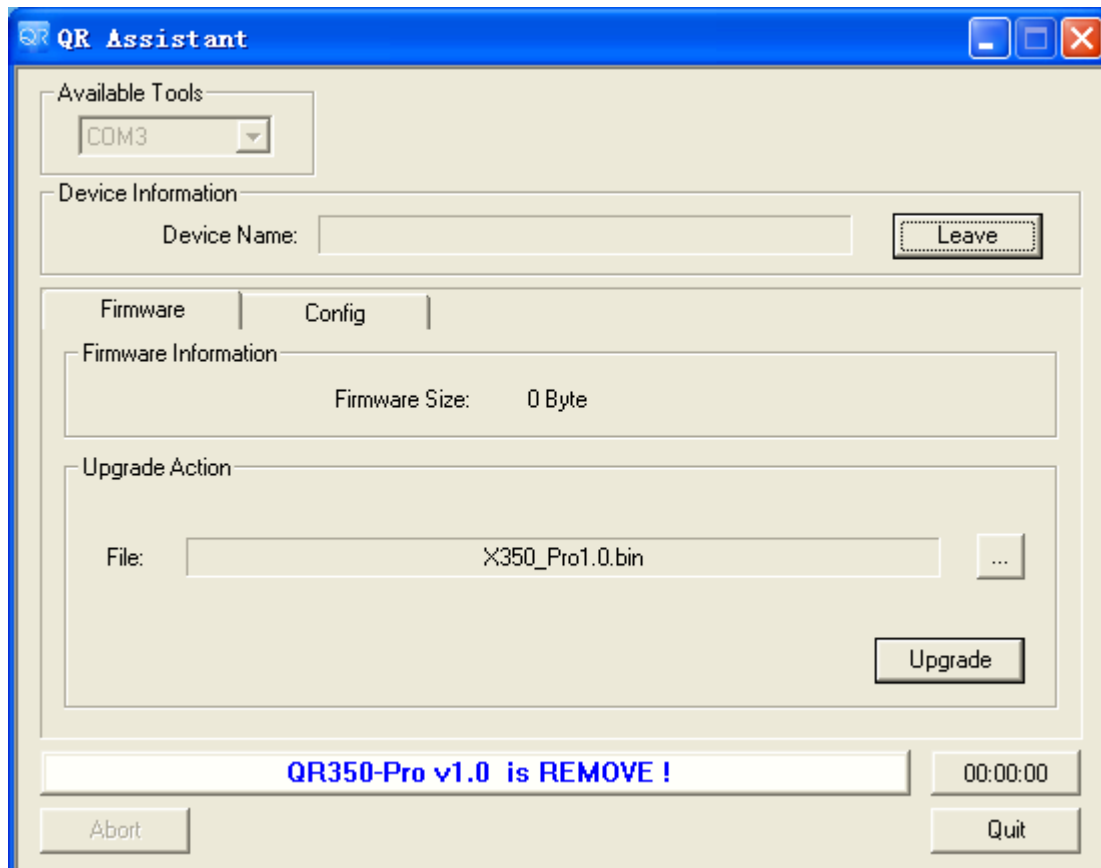
Processing showed as below:



3, Step 4: Upgrade interface appears “upgrade firmware successful ! ” and then click “Leave” for Step 5, as following Chart.



4, You can remove USB upgrade cable when the following chart occurs and the upgrade complete.



5, After upgrading, please check every setting parameters and actions are sure for normal flight.